

Apples & Bananas

Indica dominant hybrid

Available in 1/8th glass jars & 1g full flower pre-rolls in a pop top tube.

This heavy hitting indica dominant hybrid is reminiscent of old school Grand Daddy Purple with a new school twist. While the flavor is mostly true to original GDP, the strain also has other hints of fruit, gas, and a slight floral note to offer. The effects are much heavier in the body but do provide a nice cerebral stone as well.

Genetics: [(Grand Daddy Purple x Platinum Cookies) x Blue Power] x Gelatti
Breeder: Compound Genetics



Certificate of Analysis

Powered by Confident Cannabis
1 of 4

Funk Farm

Sample: 2301FID0082.0628

Strain: Apples & Bananas

Batch #: 1; Lot #:

METRC Batch: 1A4080100011942000000184; METRC Sample: 1A4080100011942000000213

Analysis Initiated: 01/07/2023; Report Created: 01/10/2023

Sampling SOP: SOP-0050

A&B Fall22

Plant, Flower - Cured, Indoor
Harvest/Production Date: 11/29/2022



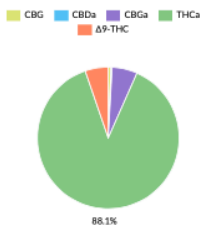
27.56%	0.07%	Pass
Total Potential Psychoactive THC	Total CBD	Foreign Matter
31.18%	33.40%	Pass
Total Raw THC	Total Cannabinoids	Moisture

Cannabinoids

Analytical Calibration Batch: Cannabinoids AF 12122022

Pass

Analyte	LOQ	Mass %	Mass mg/g
THCa	0.05	29.42	294.2
Δ9-THC	0.05	1.76	17.6
Δ8-THC	0.05	ND	ND
THCV	0.05	ND	ND
CBDa	0.05	0.08	0.8
CBD	0.05	ND	ND
CBN	0.05	ND	ND
CBGa	0.05	1.93	19.3
CBG	0.05	0.21	2.1
CBC	0.05	<LOQ	<LOQ
Total		33.40	334.0



Total Potential Psychoactive THC = THCa * 0.877 + Δ9-THC
Total CBD = CBDa * 0.877 + CBD
LOQ = Limit of Quantitation; NT = Not Tested; NR = Not Reported; ND = None Detected; PPM = Parts per Million; PPB = Parts per Billion; Unless otherwise stated all quality control samples performed within specifications established by the Laboratory.
SOP-0037: Full spectrum cannabinoid analysis by High Performance Liquid Chromatography with UV detection (HPLC-UV). Reported result is based on sample dry weight.
SOP-0035: Foreign matter inspection includes but is not limited to hair, insects, stems, and feces. Fill is inspected using a M16-209 stereoscope. Stem measurements are performed using fiber calipers.
SOP-0036: Moisture analysis is performed using a Shimadzu moisture analyzer MOC63U.

Fidelity Diagnostics Laboratory
216 Trade St.
Missoula, MT 59808
(406) 926-2211
http://www.fidimt.com
License # L-100170-003



Accredited to ISO/IEC 17025:2017
Accreditation #: 102722

Confident Cannabis
All Rights Reserved
support@confidentcannabis.com
(866) 506-5866
www.confidentcannabis.com

This product has been tested by Fidelity Diagnostics using valid testing methodologies and a quality system as required by state law. Fidelity Diagnostics makes no claims as to the efficacy, safety or other risks associated with any detected or non-detected levels of any compounds reported herein. This Certificate shall not be reproduced without the written approval of Fidelity Diagnostics. Quality and uncertainty data available upon request. Sample conformity is established through "decision rule" which is set by the State. Version No. 002 |



Certificate of Analysis

Powered by Confident Cannabis
2 of 4

Funk Farm

Sample: 2301FID0082.0628

Strain: Apples & Bananas

Batch #: 1; Lot #:

METRC Batch: 1A4080100011942000000184; METRC Sample: 1A4080100011942000000213

Analysis Initiated: 01/07/2023; Report Created: 01/10/2023

Sampling SOP: SOP-0050

A&B Fall22

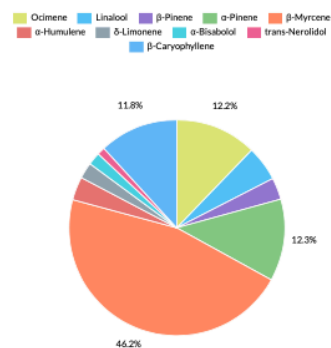
Plant, Flower - Cured, Indoor
Harvest/Production Date: 11/29/2022



Terpenes

Analytical Calibration Batch: Terpenes 12/13/2022

Analyte	LOQ	Mass %	Mass mg/g
β-Myrcene	0.008	1.600	16.00
α-Pinene	0.008	0.425	4.25
Ocimene	0.008	0.423	4.23
β-Caryophyllene	0.008	0.409	4.09
Linalool	0.008	0.182	1.82
α-Humulene	0.008	0.121	1.21
β-Pinene	0.008	0.113	1.13
δ-Limonene	0.008	0.084	0.84
α-Bisabolol	0.008	0.066	0.66
trans-Nerolidol	0.008	0.040	0.40
α-Terpinene	0.008	ND	ND
Camphene	0.008	ND	ND
Caryophyllene Oxide	0.008	ND	ND
cis-Nerolidol	0.008	ND	ND
δ-3-Carene	0.008	ND	ND
Eucalyptol	0.008	ND	ND
γ-Terpinene	0.008	ND	ND
Geraniol	0.008	ND	ND
Guaiol	0.008	ND	ND
Isoeugenol	0.008	ND	ND
p-Cymene	0.008	ND	ND
Terpinolene	0.008	ND	ND
Total		3.463	34.63



Primary Aromas



LOQ = Limit of Quantitation; NT = Not Tested; NR = Not Reported; ND = None Detected; PPM = Parts per Million; PPB = Parts per Billion; The reported result is based on a sample weight with the applicable moisture content for that sample; Unless otherwise stated all quality control samples performed within specifications established by the Laboratory.
SOP-0044: Terpene profile screen is performed using a Thermo Scientific TRACE 1300 Gas Chromatography instrument equipped with a Flame Ionization Detector (GC-FID).

Fidelity Diagnostics Laboratory
216 Trade St.
Missoula, MT 59808
(406) 926-2211
http://www.fidimt.com
License # L-100170-003



Accredited to ISO/IEC 17025:2017
Accreditation #: 102722

Confident Cannabis
All Rights Reserved
support@confidentcannabis.com
(866) 506-5866
www.confidentcannabis.com

This product has been tested by Fidelity Diagnostics using valid testing methodologies and a quality system as required by state law. Fidelity Diagnostics makes no claims as to the efficacy, safety or other risks associated with any detected or non-detected levels of any compounds reported herein. This Certificate shall not be reproduced without the written approval of Fidelity Diagnostics. Quality and uncertainty data available upon request. Sample conformity is established through "decision rule" which is set by the State. Version No. 002 |