

Blackwatermelon #1

Hybrid

Available in 1/8th glass jars & 1g full flower pre-rolls in a pop top tube.

We couldn't stay away from this phenotype when hunting. One of a kind watermelon sour patch kid like candy terps with a bit of gas to back it up. Named after the rare "Black Watermelons" of Japan this one is a heavy hitter.

Genetics: Hokkaido Sour X Zkittlez

Breeder: 3rd Gen Family Farms/ Dying Breed Seeds.



Certificate of Analysis

Powered by Confident Cannabis
1 of 4

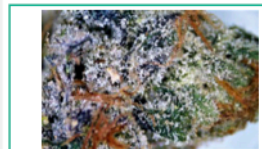
Funk Farm

Sample: 2301FID0082.0631

Strain: Black Watermelon1
Batch #: 3; Lot #:
METRC Batch: 1A408010001194200000186; METRC Sample: 1A408010001194200000216
Analysis Initiated: 01/07/2023; Report Created: 01/10/2023
Sampling SOP: SOP-0050

BW1 Fall 22

Plant, Flower - Cured, Indoor
Harvest/Production Date: 11/26/2022



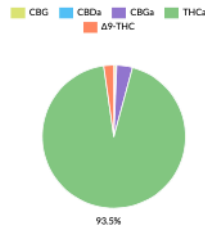
27.15% Total Potential Psychoactive THC	0.06% Total CBD	Pass Foreign Matter
30.85% Total Raw THC	32.21% Total Cannabinoids	Pass Moisture 9.56%

Cannabinoids

Analytical Calibration Batch: Cannabinoids AF 12122022

Pass

Analyte	LOQ	Mass	Mass
	%	%	mg/g
THCa	0.05	30.12	301.2
Δ9-THC	0.05	0.73	7.3
Δ8-THC	0.05	ND	ND
THCV	0.05	ND	ND
CBDa	0.05	0.07	0.7
CBD	0.05	ND	ND
CBN	0.05	ND	ND
CBGa	0.05	1.15	11.5
CBG	0.05	0.14	1.4
CBC	0.05	ND	ND
Total		32.21	322.1



Total Potential Psychoactive THC = THCa * 0.877 + Δ9-THC
Total CBD = CBDa * 0.877 + CBD
LOQ = Limit of Quantification; NT = Not Tested; NR = Not Reported; ND = None Detected; PPM = Parts per Million; PPB = Parts per Billion; Unless otherwise stated all quality control samples performed within specifications established by the Laboratory.
SOP-0037: Full spectrum cannabinoid analysis by High Performance Liquid Chromatography with UV detection (HPLC-UV). Reported result is based on sample dry weight.
SOP-0035: Foreign matter inspection includes but is not limited to hair, insects, stems, and feces. Filth is inspected using a M36-209 stereoscope. Stem measurements are performed using fisher callipers.
SOP-0036: Moisture analysis is performed using a Shimadzu moisture analyzer MOC63u UL.



Certificate of Analysis

Powered by Confident Cannabis
2 of 4

Funk Farm

Sample: 2301FID0082.0631

Strain: Black Watermelon1
Batch #: 3; Lot #:
METRC Batch: 1A408010001194200000186; METRC Sample: 1A408010001194200000216
Analysis Initiated: 01/07/2023; Report Created: 01/10/2023
Sampling SOP: SOP-0050

BW1 Fall 22

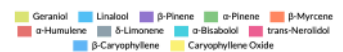
Plant, Flower - Cured, Indoor
Harvest/Production Date: 11/26/2022



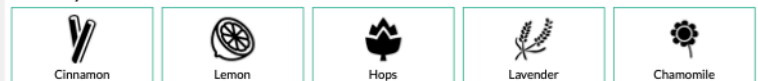
Terpenes

Analytical Calibration Batch: Terpenes 12/13/2022

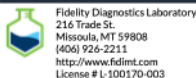
Analyte	LOQ	Mass	Mass
	%	%	mg/g
β-Caryophyllene	0.008	0.619	6.19
δ-Limonene	0.008	0.438	4.38
β-Myrcene	0.008	0.352	3.52
Linalool	0.008	0.322	3.22
α-Humulene	0.008	0.274	2.74
α-Bisabolol	0.008	0.128	1.28
β-Pinene	0.008	0.085	0.85
trans-Nerolidol	0.008	0.072	0.72
Geraniol	0.008	0.064	0.64
α-Pinene	0.008	0.034	0.34
Caryophyllene Oxide	0.008	0.025	0.25
α-Terpinene	0.008	ND	ND
Camphene	0.008	<LOQ	<LOQ
cis-Nerolidol	0.008	ND	ND
δ-3-Carene	0.008	ND	ND
Eucalyptol	0.008	ND	ND
γ-Terpinene	0.008	ND	ND
Guaiol	0.008	ND	ND
Isopulegol	0.008	ND	ND
Ocimene	0.008	ND	ND
p-Cymene	0.008	ND	ND
Terpinolene	0.008	ND	ND
Total		2.413	24.13



Primary Aromas



LOQ = Limit of Quantification; NT = Not Tested; NR = Not Reported; ND = None Detected; PPM = Parts per Million; PPB = Parts per Billion; The reported result is based on a sample weight with the applicable moisture content for that sample; Unless otherwise stated all quality control samples performed within specifications established by the Laboratory.
SOP-0044: Terpene profile screen is performed using a Thermo Scientific TRACE 1300 Gas Chromatography instrument equipped with a Flame Ionization Detector (GC-FID).



Accredited to ISO/IEC 17025:2017
Accreditation #: 102722

Andre Umansky
Laboratory Director

Confident Cannabis
All Rights Reserved
support@confidentcannabis.com
(866) 506-5866
www.confidentcannabis.com



Accredited to ISO/IEC 17025:2017
Accreditation #: 102722

Andre Umansky
Laboratory Director

Confident Cannabis
All Rights Reserved
support@confidentcannabis.com
(866) 506-5866
www.confidentcannabis.com

This product has been tested by Fidelity Diagnostics using valid testing methodologies and a quality system as required by state law. Fidelity Diagnostics makes no claims as to the efficacy, safety or other risks associated with any detected or non-detected levels of any compounds reported herein. This Certificate shall not be reproduced without the written approval of Fidelity Diagnostics. Quality and uncertainty data available upon request. Sample conformity is established through "decision rule" which is set by the State. Version No. 002 |]

This product has been tested by Fidelity Diagnostics using valid testing methodologies and a quality system as required by state law. Fidelity Diagnostics makes no claims as to the efficacy, safety or other risks associated with any detected or non-detected levels of any compounds reported herein. This Certificate shall not be reproduced without the written approval of Fidelity Diagnostics. Quality and uncertainty data available upon request. Sample conformity is established through "decision rule" which is set by the State. Version No. 002 |]