

Juiceman

Sativa leaning hybrid

Available in 1/8th glass jars & 1g pre-rolls in a pop top tube.

Hunted in-house this selection of Juiceman is well balanced and not papaya dominant like many out there. With hints of the sweet, sour, papaya, and guava terpenes. This cultivar provides a unique fuel flavor reminiscent of diesel with a subtle floral finish. Effects that of a balanced hybrid, providing a clear headed, non-sedating buzz. All of that combines to make a great strain with multi purpose.

Genetics: Fabuloso X Papaya

Breeder: Harry Palms (Oni Seed Co.)



FIDELITY DIAGNOSTICS Certificate of Analysis

Powered by Confident Cannabis 1 of 4

Funk Farm
20940 Bull Basin Road

Sample: 2301FID0082.0637

Strain: Juiceman2
Batch #: 6; Lot #:
METRC Batch: 1A408010001194200000198; METRC Sample: 1A408010001194200000222
Analysis Initiated: 01/07/2023; Report Created: 01/10/2023
Sampling SOP: SOP-0050

JM2 Fall 22
Plant, Flower - Cured, Indoor
Harvest/Production Date: 11/27/2022



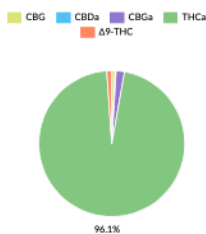
26.57% Total Potential Psychoactive THC	0.06% Total CBD	Pass Foreign Matter
30.25% Total Raw THC	31.12% Total Cannabinoids	Pass 6.91% Moisture

Cannabinoids

Analytical Calibration Batch: Cannabinoids AF 12122022

Pass

Analyte	LOQ	Mass	Mass
	%	%	mg/g
THCa	0.05	29.91	299.1
Δ9-THC	0.05	0.34	3.4
Δ8-THC	0.05	ND	ND
THCV	0.05	ND	ND
CBDa	0.05	0.07	0.7
CBD	0.05	ND	ND
CBN	0.05	ND	ND
CBGa	0.05	0.57	5.7
CBG	0.05	0.23	2.3
CBC	0.05	ND	ND
Total		31.12	311.2



Total Potential Psychoactive THC = THCa * 0.877 + Δ9-THC

Total CBD = CBDa * 0.877 + CBD

LOQ = Limit of Quantitation; NT = Not Tested; NR = Not Reported; ND = None Detected; PPM = Parts per Million; PPB = Parts per Billion; Unless otherwise stated all quality control samples performed within specifications established by the Laboratory.

SOP-0037: Full spectrum cannabinoid analysis by High Performance Liquid Chromatography with UV detection (HPLC-UV). Reported result is based on sample dry weight.

SOP-0035: Foreign matter inspection includes but is not limited to hair, insects, stems, and feces. Filth is inspected using a M16-209 stereoscope. Stem measurements are performed using fiber calipers.

SOP-0036: Moisture analysis is performed using a Shimadzu moisture analyzer MOC63u UL.

Fidelity Diagnostics Laboratory
216 Trade St.
Missoula, MT 59808
(406) 926-2211
http://www.fdimt.com
License # L-100170-003



Accredited to ISO/IEC 17025:2017
Accreditation #: 102722

Andre Umansky
Laboratory Director

Confident Cannabis
All Rights Reserved
support@confidentcannabis.com
(866) 506-5866
www.confidentcannabis.com



Fidelity Diagnostics Laboratory
216 Trade St.
Missoula, MT 59808
(406) 926-2211
http://www.fdimt.com
License # L-100170-003



Accredited to ISO/IEC 17025:2017
Accreditation #: 102722

Andre Umansky
Laboratory Director

Confident Cannabis
All Rights Reserved
support@confidentcannabis.com
(866) 506-5866
www.confidentcannabis.com



This product has been tested by Fidelity Diagnostics using valid testing methodologies and a quality system as required by state law. Fidelity Diagnostics makes no claims as to the efficacy, safety or other risks associated with any detected or non-detected levels of any compounds reported herein. This Certificate shall not be reproduced without the written approval of Fidelity Diagnostics. Quality and uncertainty data available upon request. Sample conformity is established through "decision rule" which is set by the State. Version No. 002 []

FIDELITY DIAGNOSTICS Certificate of Analysis

Powered by Confident Cannabis 2 of 4

Funk Farm

Sample: 2301FID0082.0637

Strain: Juiceman2
Batch #: 6; Lot #:
METRC Batch: 1A408010001194200000198; METRC Sample: 1A408010001194200000222
Analysis Initiated: 01/07/2023; Report Created: 01/10/2023
Sampling SOP: SOP-0050

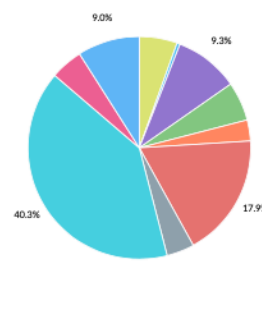
JM2 Fall 22
Plant, Flower - Cured, Indoor
Harvest/Production Date: 11/27/2022



Terpenes

Analytical Calibration Batch: Terpenes 12/13/2022

Analyte	LOQ	Mass	Mass
	%	%	mg/g
δ-Limonene	0.008	0.827	8.27
β-Myrcene	0.008	0.368	3.68
Linalool	0.008	0.192	1.92
β-Caryophyllene	0.008	0.185	1.85
β-Pinene	0.008	0.116	1.16
Guaiol	0.008	0.113	1.13
α-Bisabolol	0.008	0.097	0.97
α-Humulene	0.008	0.082	0.82
α-Pinene	0.008	0.062	0.62
Camphene	0.008	0.009	0.09
α-Terpinene	0.008	ND	ND
Caryophyllene Oxide	0.008	ND	ND
cis-Nerolidol	0.008	ND	ND
δ-3-Carene	0.008	ND	ND
Eucalyptol	0.008	ND	ND
γ-Terpinene	0.008	ND	ND
Geraniol	0.008	ND	ND
Isopulegol	0.008	ND	ND
Ocimene	0.008	ND	ND
p-Cymene	0.008	ND	ND
Terpinolene	0.008	ND	ND
trans-Nerolidol	0.008	ND	ND
Total		2.052	20.52



Primary Aromas



LOQ = Limit of Quantitation; NT = Not Tested; NR = Not Reported; ND = None Detected; PPM = Parts per Million; PPB = Parts per Billion; The reported result is based on a sample weight with the applicable moisture content for that sample; Unless otherwise stated all quality control samples performed within specifications established by the Laboratory.

SOP-0044: Terpene profile screen is performed using a Thermo Scientific TRACE 1300 Gas Chromatography instrument equipped with a Flame Ionization Detector (GC-FID).

This product has been tested by Fidelity Diagnostics using valid testing methodologies and a quality system as required by state law. Fidelity Diagnostics makes no claims as to the efficacy, safety or other risks associated with any detected or non-detected levels of any compounds reported herein. This Certificate shall not be reproduced without the written approval of Fidelity Diagnostics. Quality and uncertainty data available upon request. Sample conformity is established through "decision rule" which is set by the State. Version No. 002 []

This product has been tested by Fidelity Diagnostics using valid testing methodologies and a quality system as required by state law. Fidelity Diagnostics makes no claims as to the efficacy, safety or other risks associated with any detected or non-detected levels of any compounds reported herein. This Certificate shall not be reproduced without the written approval of Fidelity Diagnostics. Quality and uncertainty data available upon request. Sample conformity is established through "decision rule" which is set by the State. Version No. 002 []